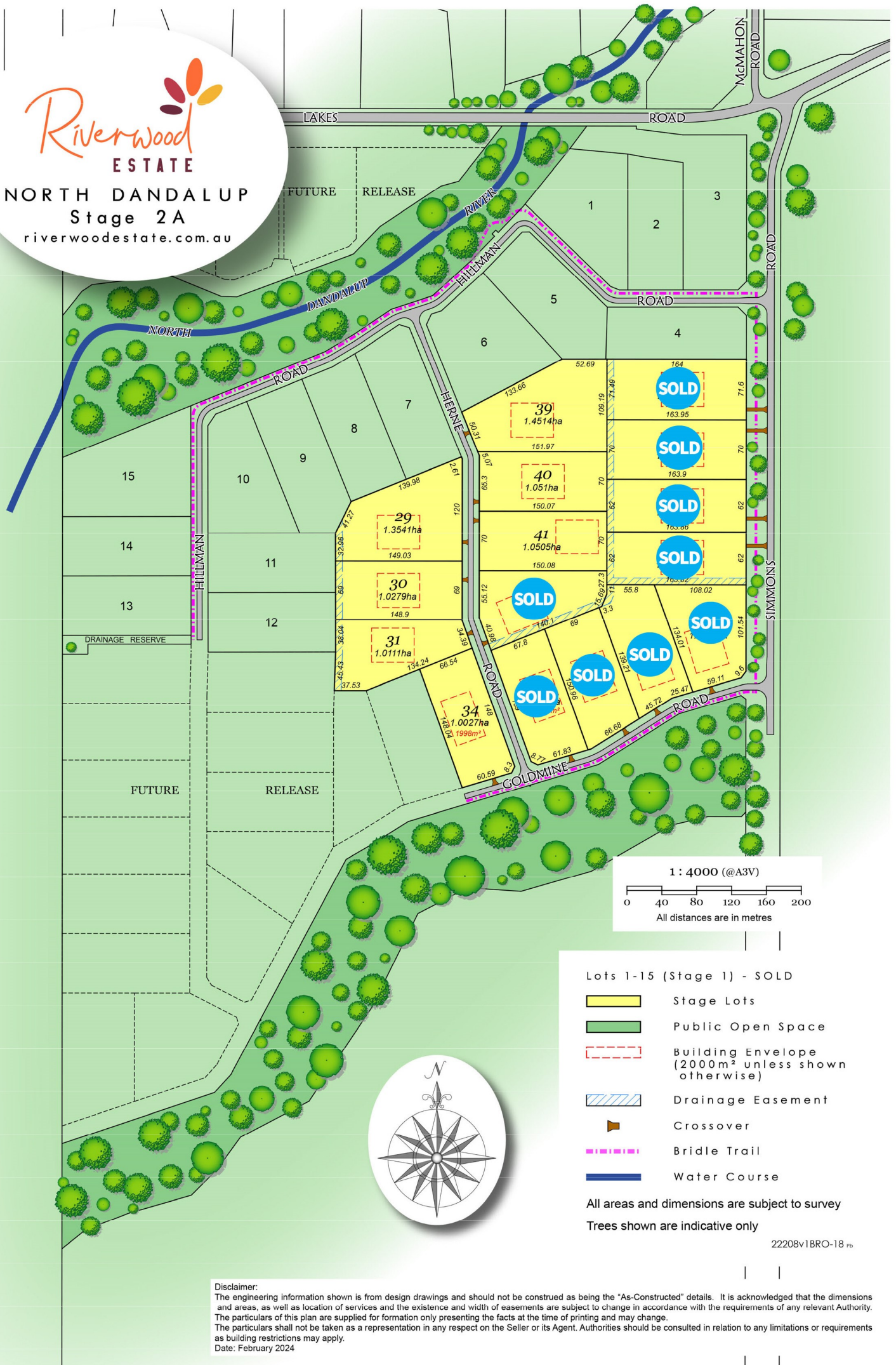




Riverwood
ESTATE
NORTH DANDALUP
Stage 2A
riverwoodestate.com.au



1 : 4000 (@A3V)
0 40 80 120 160 200
All distances are in metres

- Lots 1-15 (Stage 1) - SOLD**
- Stage Lots
 - Public Open Space
 - Building Envelope (2000m² unless shown otherwise)
 - Drainage Easement
 - Crossover
 - Bridle Trail
 - Water Course

All areas and dimensions are subject to survey
Trees shown are indicative only

22208v1BRO-18.PB

Disclaimer:
The engineering information shown is from design drawings and should not be construed as being the "As-Constructed" details. It is acknowledged that the dimensions and areas, as well as location of services and the existence and width of easements are subject to change in accordance with the requirements of any relevant Authority. The particulars of this plan are supplied for formation only presenting the facts at the time of printing and may change. The particulars shall not be taken as a representation in any respect on the Seller or its Agent. Authorities should be consulted in relation to any limitations or requirements as building restrictions may apply.
Date: February 2024